

**EBI3 Antibody**  
**Rabbit mAb**  
**Catalog # AP92438****Specification**

---

**EBI3 Antibody - Product Information**

|  |                               |
|--|-------------------------------|
| Application  | <b>WB</b>                     |
| Primary Accession  | <a href="#"><u>Q14213</u></a> |
| Reactivity   | <b>Rat</b>                    |
| Clonality  | <b>Monoclonal</b>             |
| <b>Other Names</b>   |                               |
| EBI3; IL-27B; IL27 subunit beta; IL27B; interleukin 27 subunit beta; |                               |
| Isotype  | <b>Rabbit IgG</b>             |
| Host   | <b>Rabbit</b>                 |
| Calculated MW  | <b>25396 Da</b>               |

**EBI3 Antibody - Additional Information**

|                              |   |
|------------------------------|---|
| Dilution                     | <b>WB~~1:1000</b>   |
| Purification                 | <b>Affinity-chromatography</b>  |
| Immunogen                    | <b>A synthesized peptide derived from human EBI3</b>  |
| Description                  | <b>Associates with IL27 to form the IL-27 interleukin, a heterodimeric cytokine which functions in innate immunity. IL-27 has pro- and anti-inflammatory properties, that can regulate T-helper cell development, suppress T-cell proliferation, stimulate cytotoxic T-cell activity, induce isotype switching in B-cells, and that has diverse effects on innate immune cells.</b> |
| Storage Condition and Buffer | <b>Rabbit IgG in phosphate buffered saline , pH 7.4, 150mM NaCl, 0.02% sodium azide and 50% glycerol. Store at +4°C short term. Store at -20°C long term. Avoid freeze / thaw cycle.</b>  |

**EBI3 Antibody - Protein Information****Name** EBI3**Synonyms** IL27B**Function**

Associates with IL27 to form the IL-27 interleukin, a heterodimeric cytokine which functions in innate immunity. IL-27 has pro- and anti-inflammatory properties, that can regulate T-helper cell development, suppress T-cell proliferation, stimulate cytotoxic T-cell activity, induce isotype switching in B-cells, and that has diverse effects on innate immune cells. Among its target cells are

CD4 T-helper cells which can differentiate in type 1 effector cells (TH1), type 2 effector cells (TH2) and IL17 producing helper T-cells (TH17). It drives rapid clonal expansion of naive but not memory CD4 T-cells. It also strongly synergizes with IL-12 to trigger interferon-gamma/IFN- gamma production of naive CD4 T-cells, binds to the cytokine receptor WSX-1/TCCR. Another important role of IL-27 is its antitumor activity as well as its antiangiogenic activity with activation of production of antiangiogenic chemokines.

#### **Cellular Location**

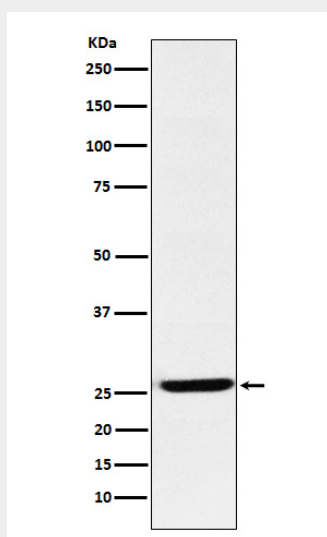
Secreted.

#### **EBI3 Antibody - Protocols**

Provided below are standard protocols that you may find useful for product applications.

- [Western Blot](#)
- [Blocking Peptides](#)
- [Dot Blot](#)
- [Immunohistochemistry](#)
- [Immunofluorescence](#)
- [Immunoprecipitation](#)
- [Flow Cytometry](#)
- [Cell Culture](#)

#### **EBI3 Antibody - Images**



Western blot analysis of EBI3 expression in K562 cell lysate.